

2.4 A Square Deal

A Solidify Understanding Task

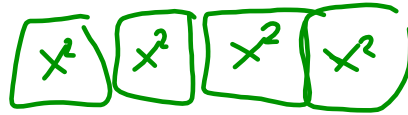


CC BY David Amsler
<https://flic.kr/p/d7Lap7>

Quadratic Quilts, Revisited

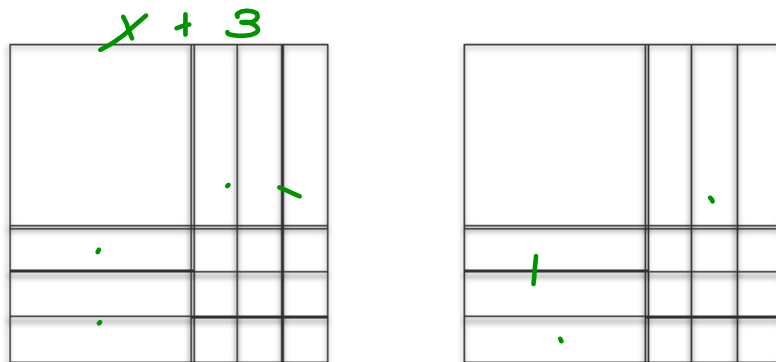
Remember Optima's quilt shop? She bases her designs on quilt squares that can vary in size, so she calls the length of the side for the basic square x , and the area of the basic square is the function $A(x) = x^2$. In this way, she can customize the designs by making bigger squares or smaller squares.

1. Sometimes a customer orders more than one quilt block of a given size. For instance, when a customer orders 4 blocks of the basic size, the customer service representatives write up an order for $A(x) = 4x^2$. Model this area expression with a diagram.



Sep 19-10:58 AM

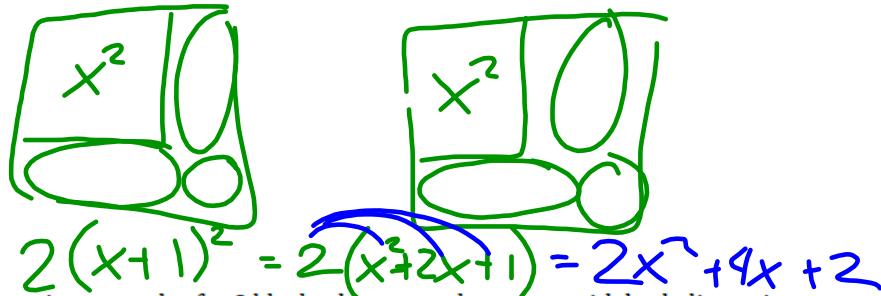
2. One of the customer service representatives finds an envelope that contains the blocks pictured below. Write the order that shows two equivalent equations for the area of the blocks.



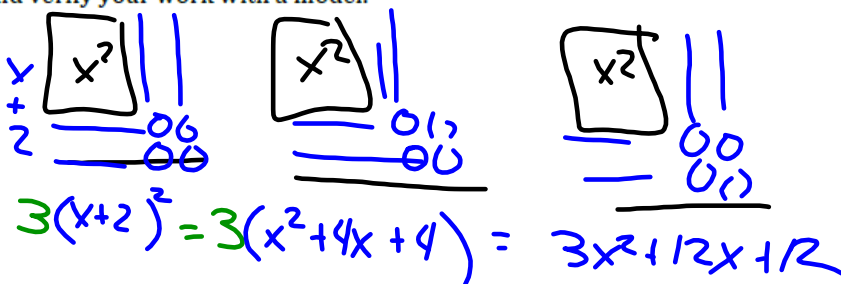
$$2(x+3)^2 = 2x^2 + 12x + 18$$

Sep 19-10:59 AM

3. What equations for the area could customer service write if they received an order for 2 blocks that are squares and have both dimensions increased by 1 inch in comparison to the basic block? Write the area equations in two equivalent forms. Verify your algebra using a diagram.

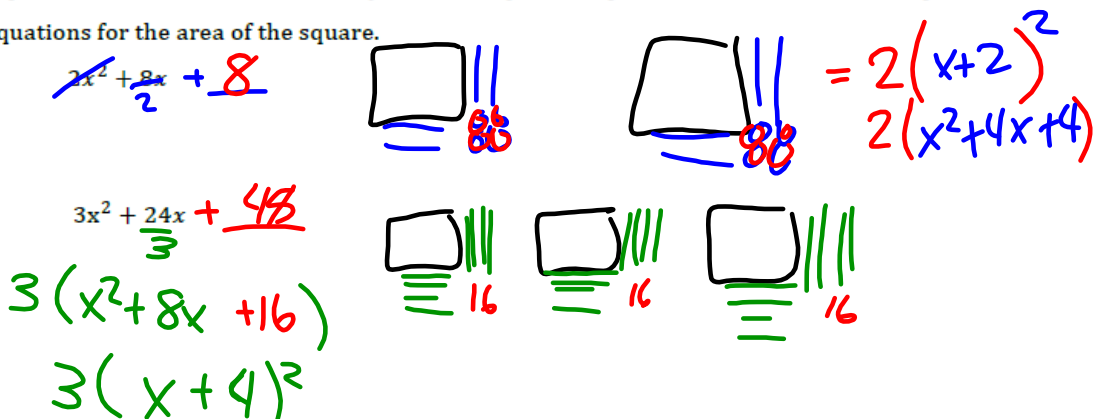


4. If customer service receives an order for 3 blocks that are each squares with both dimensions increased by 2 inches in comparison to the basic block? Again, show 2 different equations for the area and verify your work with a model.



Sep 19-10:59 AM

5. Clementine is at it again! When is that dog going to learn not to chew the orders? (She also chews Optima's shoes, but that's a story for another day.) Here are some of the orders that have been chewed up so they are missing the last term. Help Optima by completing each of the following expressions for the area so that they describe a perfect square. Then, write the two equivalent equations for the area of the square.

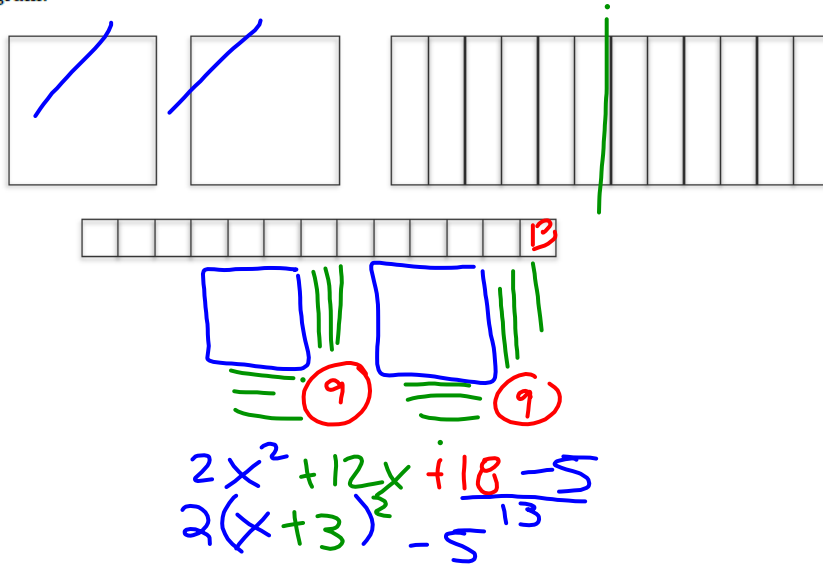


Sep 19-10:59 AM

Sometimes the quilt shop gets an order that turns out not to be more or less than a perfect square. Customer service always tries to fill orders with perfect squares, or at least, they start there and then adjust as needed.

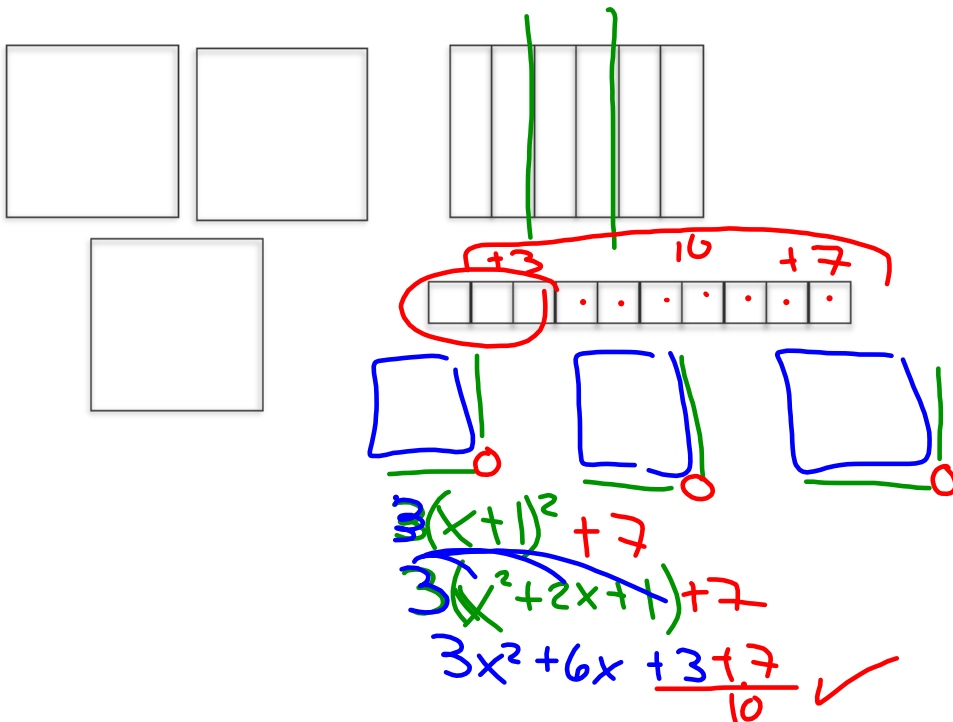
6. Now here's a real mess! Customer service received an order for an area

$A(x) = 2x^2 + 12x + 13$. Help them to figure out an equivalent expression for the area using the diagram.



Sep 19-11:00 AM

7. Optima really needs to get organized. Here's another scrambled diagram. Write two equivalent equations for the area of this diagram:



Sep 19-11:00 AM

8. Optima realized that not everyone is in need of perfect squares and not all orders are coming in as expressions that are perfect squares. Determine whether or not each expression below is a perfect square. Explain why the expression is or is not a perfect square. If it is not a perfect square, find the perfect square that seems "closest" to the given expression and show how the perfect square can be adjusted to be the given expression.

A. $A(x) = x^2 + 6x + 13$
 Handwritten work: $(x+3)^2 + 4$. Diagram shows a square with side length 3, and a red arrow pointing to $+9$ above the 13, and another red arrow pointing to $+4$ next to the 13.

B. $A(x) = x^2 - 8x + 16 = (x-4)^2$
 Handwritten work: $(x-4)^2$. Diagram shows a square with side length 4, and a red arrow pointing to $+16$ below the 16.

C. $A(x) = x^2 - 10x - 3$
 Handwritten work: $(x-5)^2 - 28$. Diagram shows a square with side length 5, and a red arrow pointing to $+25$ below the 10, and another red arrow pointing to -28 next to the -3 .

D. $A(x) = 2x^2 + 8x + 14$
 Handwritten work: $2(x+2)^2 + 6$. Diagram shows two squares, each with side length 2, and a red arrow pointing to $+6$ next to the 14.

E. $A(x) = 2x^2 - 22x + 11$
 Handwritten work: $2(x - \frac{11}{2})^2 - \frac{77}{4}$. Diagram shows two squares, each with side length $\frac{11}{2}$, and a red arrow pointing to $-\frac{77}{4}$ next to the 11.

Sep 19-11:00 AM

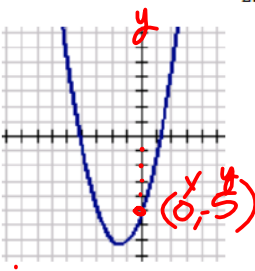
9. Now let's generalize. Given an expression in the form $ax^2 + bx + c$ ($a \neq 0$), describe a step-by-step process for completing the square.


Sep 19-11:00 AM

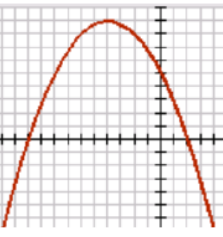
READY

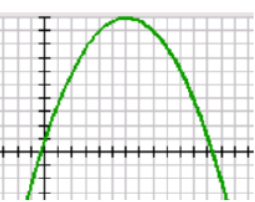
Topic: Find y-intercepts in parabolas


State the y-intercept for each of the graphs. Then match the graph with its equation.

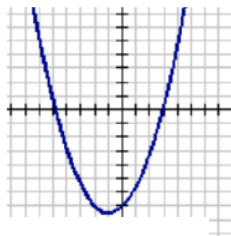
1. 

2. 

3. 

4. 

5. 

6. 

a. $f(x) = -x^2 + 2x - 1$ b. $f(x) = -.25x^2 - 2x + 5$ c. $f(x) = x^2 + 3x - 5$
 d. $f(x) = .5x^2 + x - 7$ e. $f(x) = -.25x^2 + 3x + 1$ f. $f(x) = x^2 - 4x + 4$

Handwritten notes: Sub $x=0$, $(0, -5)$

Sep 19-11:01 AM

SET

Topic: Completing the square when $a > 1$.

Fill in the missing constant so that each expression represents 5 perfect squares. Then state the dimensions of the squares in each problem.

7. $5x^2 + 30x + 45$
 $(\equiv 9) 5(x+3)^2$

8. $5x^2 - 50x + 125$
 $(\equiv 25) 5(x-5)^2$

9. $5x^2 + 10x + \underline{\hspace{2cm}}$

10. Given the scrambled diagram below, write two equivalent equations for the area.

Determine if each expression below is a perfect square or not. If it is not a perfect square, find the perfect square that seems "closest" to the given expression and show how the perfect square can be adjusted to be the given expression.

11. $A(x) = x^2 + 10x + 14$

12. $A(x) = 2x^2 + 16x + 6$

13. $A(x) = 3x^2 + 18x - 12$

$2 \left(\begin{array}{c} \square \\ ||| \\ ||| \\ ||| \\ ||| \\ \dots \\ \dots \\ \dots \\ \dots \\ \dots \end{array} \right) - 26$

$2(x+4)^2 - 26$

$2(x^2 + 8x + 16) - 26$

$2x^2 + 16x + 32 - 26$

Sep 19-11:01 AM

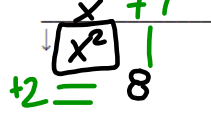
Sec 2

Name _____

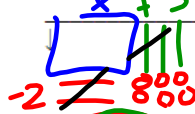
Algebra Tiles 3: Multiplying and Dividing (Factoring)

Find each product (Multiply).

1) $(x+1)(x+2) = x^2 + 3x + 2$



2) $(x-2)(x+3) = x^2 + x - 6$



3) $(x-2)(x-1) = x^2 - 3x + 2$



4) $(x+2)(x-3) = x^2 - x - 6$

$x^2 - 3x + 2x - 6$



5) $(x-1)(x+4)$

6) $(x+2)(x-3)$

7) $(x-2)(x-3)$

8) $(k+5)(4k-5)$

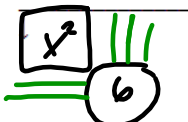
9) $(2n-3)(2n+2)$

10) $(4v-3)(v+4)$

Sep 19-12:04 PM

Factor each completely. (Divide)

11) $x^2 + 5x + 6 = (x+3)(x+2)$



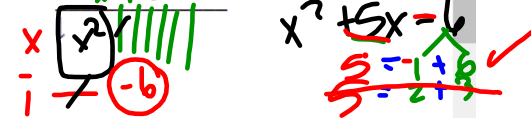
12) $x^2 - 6x + 8 = (x-4)(x-2)$



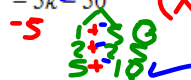
13) $x^2 + x - 6 = (x-2)(x+3)$



14) $x^2 + 5x - 6 = (x-1)(x+6)$



15) $k^2 - 5k - 50 = (k+5)(k-10)$



16) $x^2 - 4x - 45$

17) $a^2 + 7a + 10$

18) $b^2 - 3b + 2$

19) $r^2 - r - 30$

20) $m^2 - 5m + 6$

Sep 19-12:04 PM

Find each product. (11th grade Extension)

Extra Credit

21) $(8x - 5)(8x + 5)$

22) $(6k - 5)(6k + 5)$

23) $4(7k^2 - 3k + 2)$

24) $3(5r^2 + 6r + 6)$

25) $(8a + 3)(4a^2 - 5a - 8)$

26) $(6x + 3)(4x^2 + 6x - 3)$

27) $(7r^2 - 6r - 6)(2r^2 + r - 4)$

28) $(x^2 + 4x + 3)(2x^2 + 3x - 3)$

Sep 19-12:04 PM

GO

Topic: Evaluating functions.

Find the indicated function value when $f(x) = 4x^2 - 3x - 25$ and $g(x) = -2x^2 + x - 5$.

14. $f(1)$

15. $f(5)$

16. $g(10)$

17. $g(-5)$

18. $f(0) + g(0)$

Sep 19-11:01 AM